



# **The strategy of the University of Bologna to foster multidisciplinary**

**Prof. Dario Braga, Vice-Chancellor for Research**

**Alessia Franchini, European Research and Innovation Office**

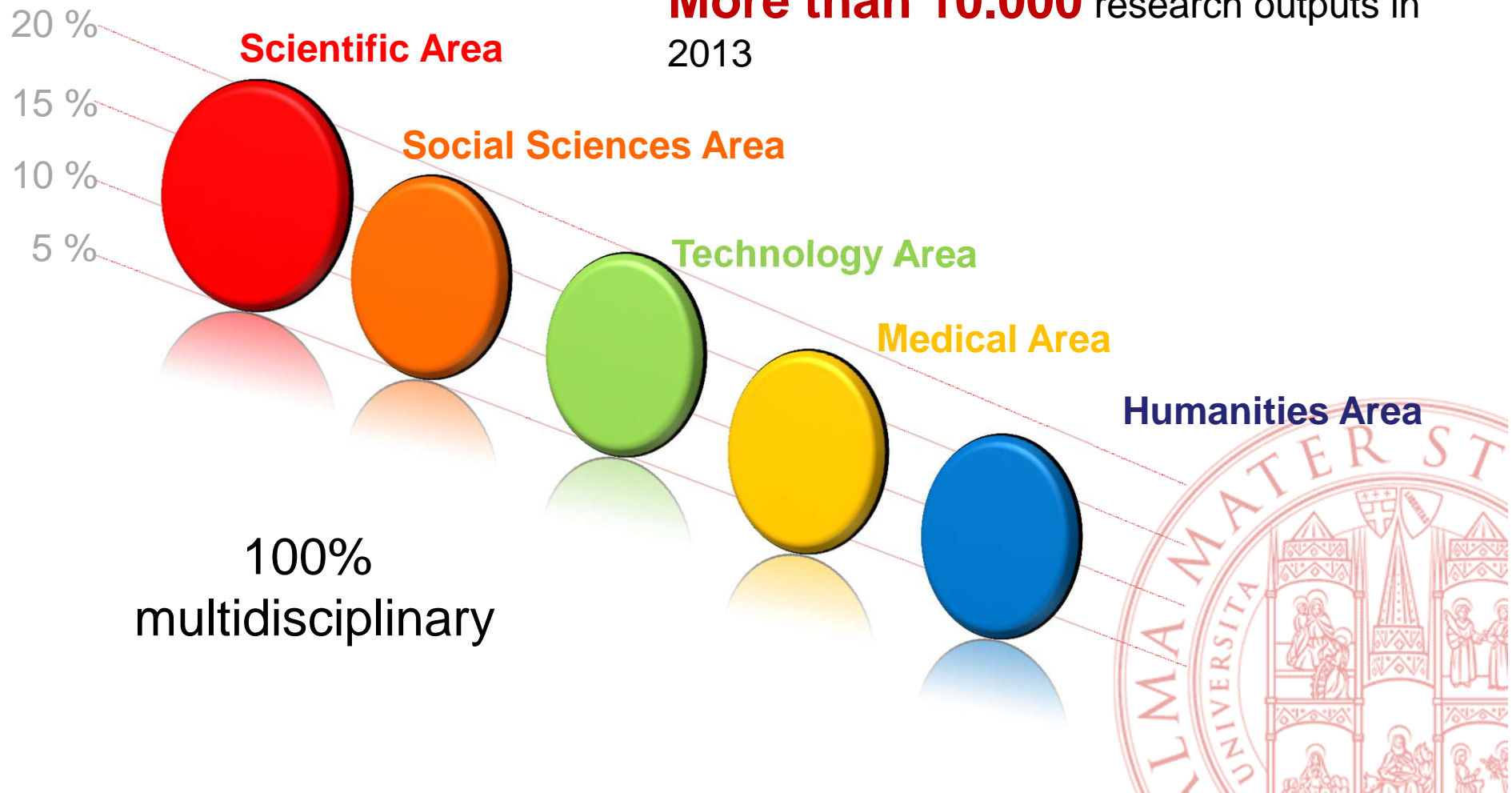
**University of Bologna**

# Multidisciplinary by birth and mission

**2.860** academic staff

**1.300** research assistants/post-docs

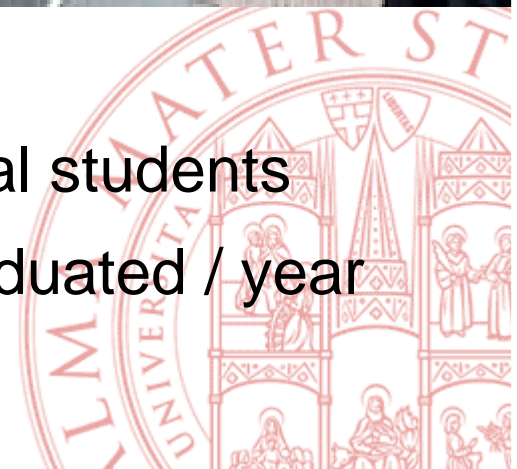
**More than 10.000** research outputs in 2013



# PhD @UniBo



**1.800** doctoral students  
**600** PhD graduated / year





# Multidisciplinary AND Multicampus

**5**  
Campus

**11**  
Schools

**33**  
Departments



# INFRASTRUCTURES - REGIONAL TECHNOPOLES

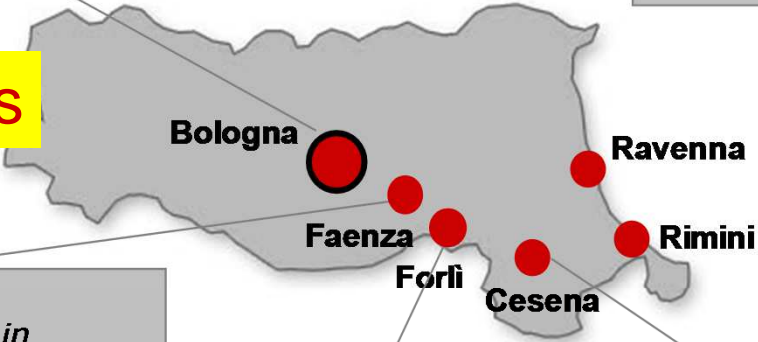
7 INTERDEPARTMENTAL CENTERS FOR INDUSTRIAL RESEARCH @ THE UNIVERSITY OF BOLOGNA 22 RESEARCH PROJECTS

>300 FULL TIME RESEARCHERS  
120 NEWLY EMPLOYED YOUNG RESEARCHERS

- Advanced Applications in Mechanical Engineering and Materials Technology
- Buiding and Construction
- *Energy and Enviroment*
- *Health Science and Technologies*
- *ICT*

- RAVENNA
- *Advanced Applications in Mechanical Engineering and Materials Technology*
  - *Buiding and Construction*
  - *Energy and Enviroment*

22 ml€ - 4 years



- FAENZA
- *Advanced Applications in Mechanical Engineering and Materials Technology*

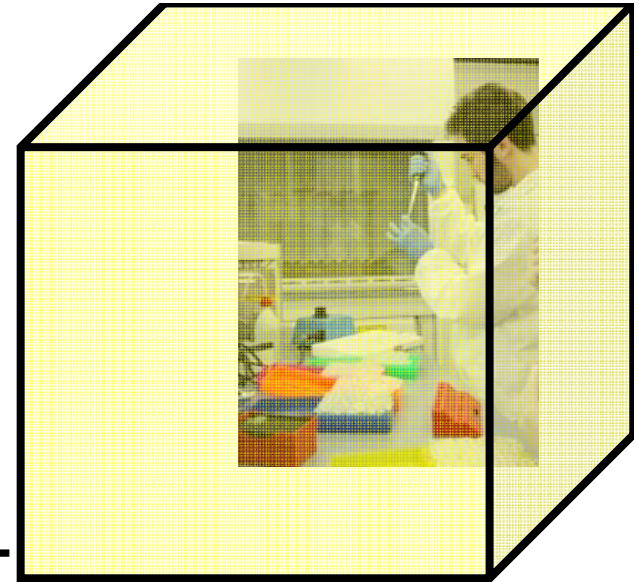
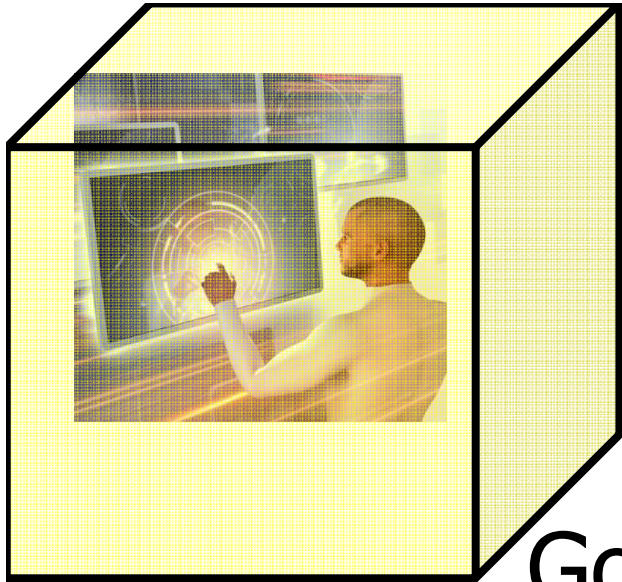
- FORLÌ
- *Aeronautics*
  - *ICT*

- CESENA
- *Agro-food*
  - *ICT*

- RIMINI
- *Advanced Applications in Mechanical Engineering and Materials Technology*
  - *Energy and Enviroment*







Good independent  
researchers  
inside boxes

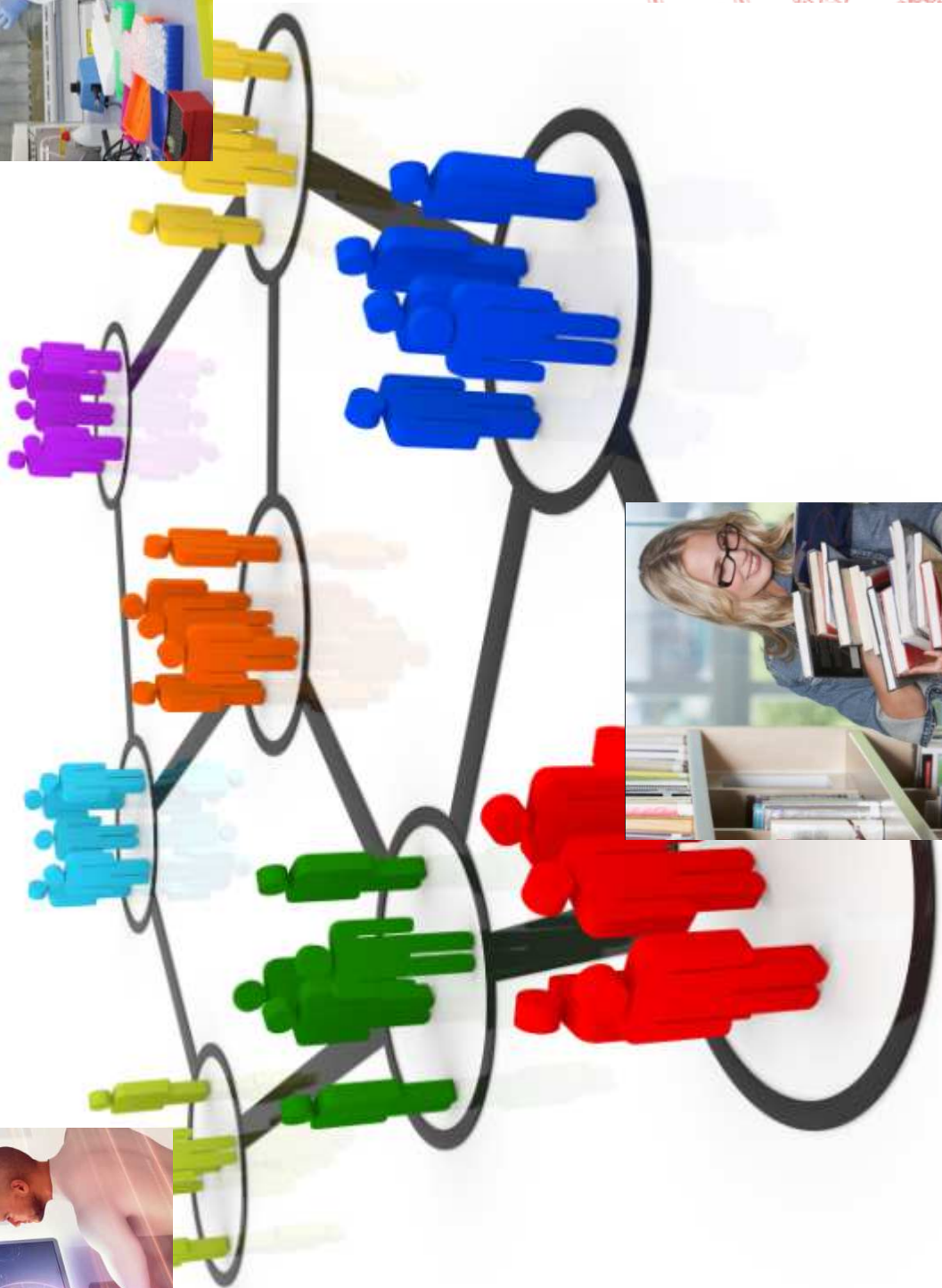




how to  
connect  
them ?









# INTEGRATED RESEARCH TEAMS



CONNECT AREAS  
CONNECT PEOPLE



# Integrated Research Teams

- A **CRITICAL MASS** OF SCIENTISTS WORKING ON COMMON OBJECTIVES



# Integrated Research Teams

- A **CRITICAL MASS** OF SCIENTISTS WORKING ON COMMON OBJECTIVES
- AN **INTERDISCIPLINARY** AND **COMPLEMENTARY** APPROACH



# Integrated Research Teams

- A **CRITICAL MASS** OF SCIENTISTS WORKING ON COMMON OBJECTIVES
- AN **INTERDISCIPLINARY** AND **COMPLEMENTARY** APPROACH
- A STRATEGIC AND INTEGRATED **VISION** TO PROMOTE SCIENTIFIC EXCELLENCE





# Integrated Research Teams

- A **CRITICAL MASS** OF SCIENTISTS WORKING ON COMMON OBJECTIVES
- AN **INTERDISCIPLINARY** AND **COMPLEMENTARY** APPROACH
- A STRATEGIC AND INTEGRATED **VISION** TO PROMOTE SCIENTIFIC EXCELLENCE
- A GROUP OF **COMPETITIVE RESEARCH PARTNERS** FOR UNIVERSITIES, RESEARCH ORGANIZATIONS AND THE WHOLE SCIENTIFIC COMMUNITY
- **MEETING THE CHALLENGES** OF EUROPEAN RESEARCH



# Integrated Research Teams

**ALMA HERITAGE  
SCIENCE IRT**



**SCIENCE AND  
TECHNOLOGY FOR  
CULTURAL HERITAGE**

[www.heritage.unibo.it](http://www.heritage.unibo.it)

**SECS IRT**



**SOCIAL ECONOMY AND  
CIVIL SOCIETY**

[www.secs.unibo.it](http://www.secs.unibo.it)

**ALMA FOOD  
IRT**



**AGRO - FOOD**

[www.almafood.unibo.it](http://www.almafood.unibo.it)

**BRASIL IRT**



**RESEARCH ON AND  
WITH BRAZIL**

[www.unibo.it/IRTBrasil/default.htm](http://www.unibo.it/IRTBrasil/default.htm)

**ALMA SEQ**



**GENOME  
SEQUENCING**

<http://www.irt.unibo.it/en/alma-sequencing>



# NEWLY BORN INTEGRATED RESEARCH TEAMS

**ALMA LOW CARBON**

**ENERGY, TRANSITION SOCIETY  
SUSTAINABILITY**

**OUTER SPACE - ATMOSPHERE**

**ALMA AEREO&SPACE**

**ALMA GENDER**

**GENDER STUDIES – WOMEN IN  
SCIENCE AND TECHNOLOGY**





New ideas  
will come  
across



# Addressing the challenge of SSH

- How to overcome bias and divides within SSH and between SSH and S&T disciplines in terms of mind sets and methodologies (what's the payoff?)
- How to identify relevant topics/challenges of common interest
- How to create mutual knowledge, synergies and foster internal collaborations/coordination
- How to build and implement interdisciplinarity into a proposal (learning exercise)



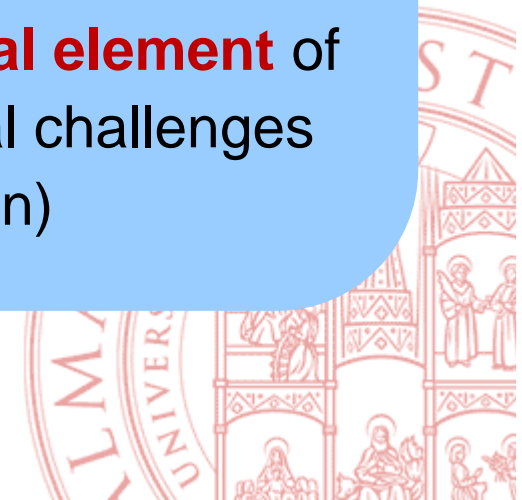


# SSH in Horizon 2020

- SSH as a cross-cutting issue

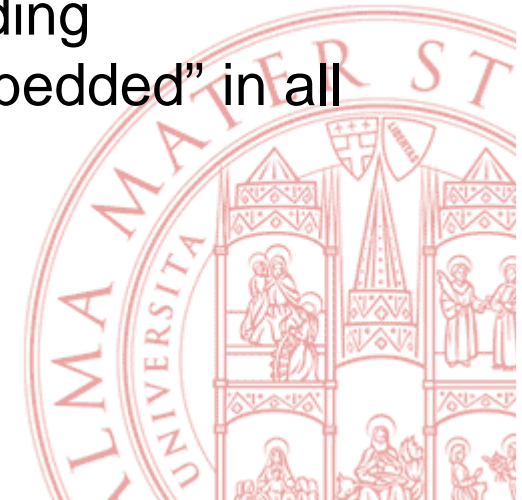
Social sciences and humanities research will be **fully integrated into each of the priorities of Horizon 2020** and each of the specific objectives and will contribute to the evidence base for policy making at international, Union, national, regional and local level.

In relation to societal challenges, social sciences and humanities will be **mainstreamed as an essential element** of the activities needed to tackle each of the societal challenges to enhance their impact. (Horizon 2020 Regulation)



# EuPer: the ideas we started from..

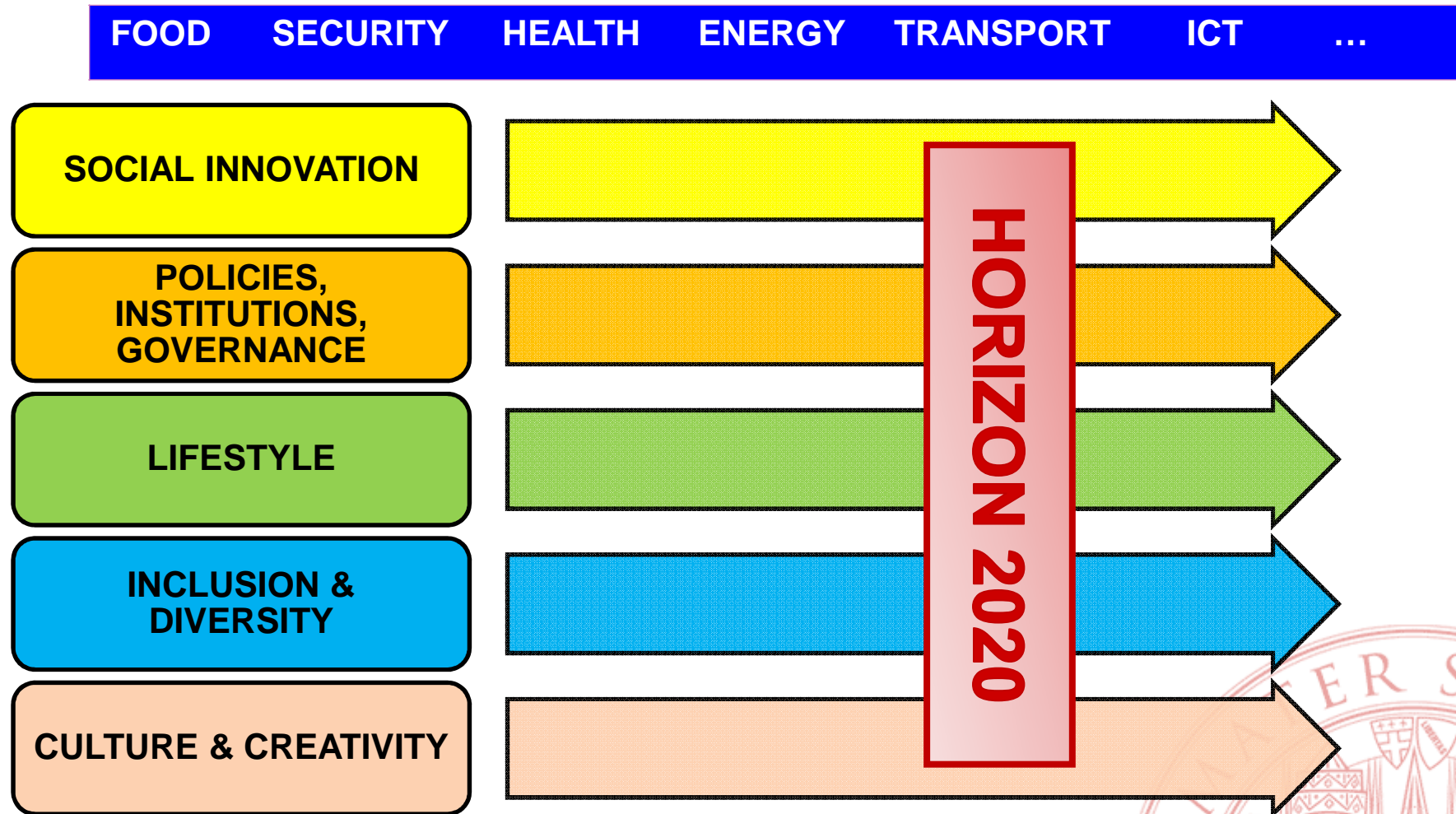
- Gather a **critical mass of researchers** around the big European and global challenges: e.g. European integration, employment, inclusion, tourism, migration, welfare, lifestyles, cultural heritage
- **Foster interdisciplinary** initiatives and projects: bring together researchers from different fields so as to create **unexpected synergies**
- **Support the participation of SSH researchers** in an increasingly competitive field of European funding programmes for research where SSH are “embedded” in all challenges



# Re-reading H2020 from the SSH perspective



# The drivers for interdisciplinarity



Mapping, positioning, collaborating



# EuPer objectives

An intangible infrastructure for..

- **mapping** interdisciplinary research capacities organised around relevant European challenges
- strengthening **internal coordination** and **synergies**
- increasing **dialogue and collaborations** at EU and international level in all S&T fields





# What is EuPer?

- an invisible connection among **more than 500 Unibo researchers**
- research managers (central administration) and researchers (departments) **working together in open and flexible ways** with a shared approach to interdisciplinary research
- an innovative **organisational model** to address the challenge of interdisciplinarity





**Thank you**



Florence 2014





**Enjoy the conference !**